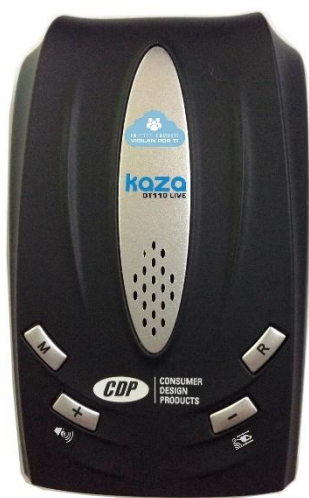


## **KAZA 110 EUROPE RADAR WARNING EUROPEAN MODEL -**

### **1. Introduction**

Thank you for purchasing the KAZA DT 110 RADAR WARNING

### **2. Equipment Features**



1. Time zone selection.
2. Clock with hour warning.
3. Warnings that the cruise speed programmed by the user voluntarily is exceeded.
4. On-screen heading compass.
5. Shows the distance to the radar.
6. Adjustable volume.
7. Displays the actual speed of the vehicle (GPS).
8. The margin of error in the speed display with respect to the car's speedometer is adjustable by +/- 5 km/h.
9. You can choose from four warning modes: PRL, P, PR, PL

<b>ORP</b>	Warnings: Fixed Radars, Possible Mobile Radars and Dangerous Spots.
<b>PR</b>	Warnings: Fixed Radars and, by statistics, possible presence of Mobile Radars.
<b>PL</b>	Warnings: Fixed Radars and Dangerous Points.
<b>P</b>	Warnings: Fixed radars.

What's in the box:

- KAZA DT 110 warning
- Car adapter 12V-24 DC with GSM/GPRS modem.
- User manual.
- Magnet for attachment on the dashboard.
- USB cable for database update.

### 3. Getting Started with Equipment

To update the database, connect the USB update cable to the drive and PC and run the update software. Then, follow the instructions in point 15 of this manual.

In the car:

1. Connect the adapter cable to the car's cigarette lighter and equipment.
2. Hold the detector by one of the methods supplied to the. Poor placement significantly reduces GPS coverage.
3. The GPS is active and fully functional, the device will function as a GPS warning.

### 4. Display Information

#### **Important notice:**

The red indicators on the display automatically turn off after 10 seconds so as not to distract the driver. They will turn on when appropriate or by pressing any key.



- P: Reports that danger points and alert service points are activated.  
 R: It reports that the frequency does not exist in the GPS memory.

On-screen GPS warnings:

- When you are driving, it will inform you of the actual GPS speed of your vehicle.
- When you go through a fixed radar, it will inform you of the distance to reach it with a countdown.
- When passing through an area where mobile speed cameras are usually placed, it will indicate: If the point is accurate, a countdown of the distance to that point. If the point is inaccurate, it will indicate a countdown to zero and then a countdown to finish roughly 500 m away. This method will then indicate an area and not a specific point.

## 5. Types of GPS Notice

Database Notices:

Fixed radars

Tunnel radars

Traffic light radars

Induction radars

Fixed variable speed cameras

Stretch control radars (optical)

Mobile speed camera statistics

Statistics on breathalyzer controls.

Statistics of dangerous points, curves, crossings...

Statistics of non-detectable mobile speed cameras (Autovelox database only)

Other...

## 6. Programming, operation and menu options.



### Volume Adjustment

Briefly press the "+" or "-" key to change the volume intensity. Every time you press "+" or "-" on the screen, the numbers from 1 to 5 appear in a circular way.

## "M" Key Menu

For each press of the "M" key, enter one of the menu options from 1 to 11. As a general rule within this option, the "+" or "-" key is used to choose the options.

### Menu 1: Selecting the GPS Alerts Mode

Pressing the "M" key once will enter this menu and you will hear "Current Alarm Mode".

There are 4 options that you can select with the "+" or "-" key

- ORP** --- The GPS will warn you of Fixed Radars, possible Mobile Radars and Dangerous or Informative Points.
- PR** --- The GPS will warn you of Fixed Radars and possible presence of Mobile Radars.
- PL** --- The GPS will warn you of Fixed Speed Cameras and Dangerous or Informational Points.
- P** --- The GPS will warn you of Fixed Speed Cameras.

Select the desired mode with the "+" or "-" key. After that, wait for the device to return to the home screen.

**Note: If you have the Autovelox database loaded, all configurations will also warn of "Possible areas controlled by Autovelox or Lidar undetectable". If you do not want this feature, load the regular database. See updates section.**

### Menu 4: Cruise Speed Adjustment

Press the "M" key four times. You will hear the voice "Selecting the cruising speed limit", pressing the "+" or "-" key you can turn it off (Off) or set the speed limit from 30 to 160.

When your vehicle exceeds the selected speed, your device will issue the "exceed the speed limit" warning.

### Menu 7: Continuous Warning Sound for Excessive Cruising Speed

Press the "M" key seven times. You will hear "Continuous Notice". By pressing the "+" or "-" key you can change the value between on and off.

This option, if activated, will repeat the speeding warning. If it is deactivated, it will only tell you when you exceed it, but it will not remember it until you slow down and overtake it again.

### Menu 8: Fine adjustment of the indicated speed

This option is used to adjust the speed that appears on the screen of your device in relation to that indicated by the speedometer of your car. It is recommended to leave it at "0" since the speed marked by the GPS is more accurate than that of car speedometers.

Press the "M" key eight times. You will hear "Fine adjustment speed indicated".

By pressing the "+" or "-" button you can choose from -5 to +5 Km/h.

### Menu 9: Factory Defaults

This option is used to return all options to their original factory state.

Press the "M" key nine times. You'll hear "Factory Values."

Pressing the "OK" key will return to factory settings and the detector antenna will return to a disconnected state, turning the device into a simple GPS warning.

## **7. False GPS warnings.**

### **Warnings with a speed lower than the speed of the road**

If the GPS gives a warning with a lower speed than the road on which we are driving, it is because, in certain circumstances, the GPS may be giving a warning of the service road, a nearby intersection or a parallel road. As it does not carry cartography like a navigator, the GPS warns when we are approaching a point that it has in the database with a certain course, but it does not know if we are exactly on that road or on the adjacent one.

Other times it may happen that it gives us a warning of a point that is 500 meters ahead, but if we deviate before arriving and the warning disappears.

### **Warnings of possible mobile radar**

The GPS keeps a database with a statistic of positions where mobile radars usually sanction. Remember that this is a statistic and that they do not have to be there when we pass through that point. To detect these radars, the device has the detector antenna.

### **Warnings of dangerous points, curves and breathalyzer controls**

These warnings occur when we are within a radius of approximately 250 meters. We may not see them but they may be on the service road, adjacent road, etc.

### **The GPS has not given me a warning of a fixed radar, tunnel, traffic light, etc.**

Update the database version. In the unlikely event that you still do not give the notice, please contact us via the [www.gpsalerta.com](http://www.gpsalerta.com) website to report that this item is missing from the database.

### **The GPS has not given me a warning of a fixed radar inside a tunnel**

Inside a tunnel there is no GPS coverage, so the device will warn you before you enter but not inside it.

## 8. Database update

To update the device database, you will need to download them from the

- <https://www.kaza.es>
- <https://www.kaza.es/categoria-producto/avisadores-y-detectores-de-radar-kaza/actualizaciones-kaza/>
- **Video Tutorial:** <https://youtu.be/6iqedjbEuuc>

Download the program the first time and the database every time you want to upgrade. Copy them to your PC.

Run the update schedule:



Connect the GPS with the supplied USB cable and wait for the program to detect it.

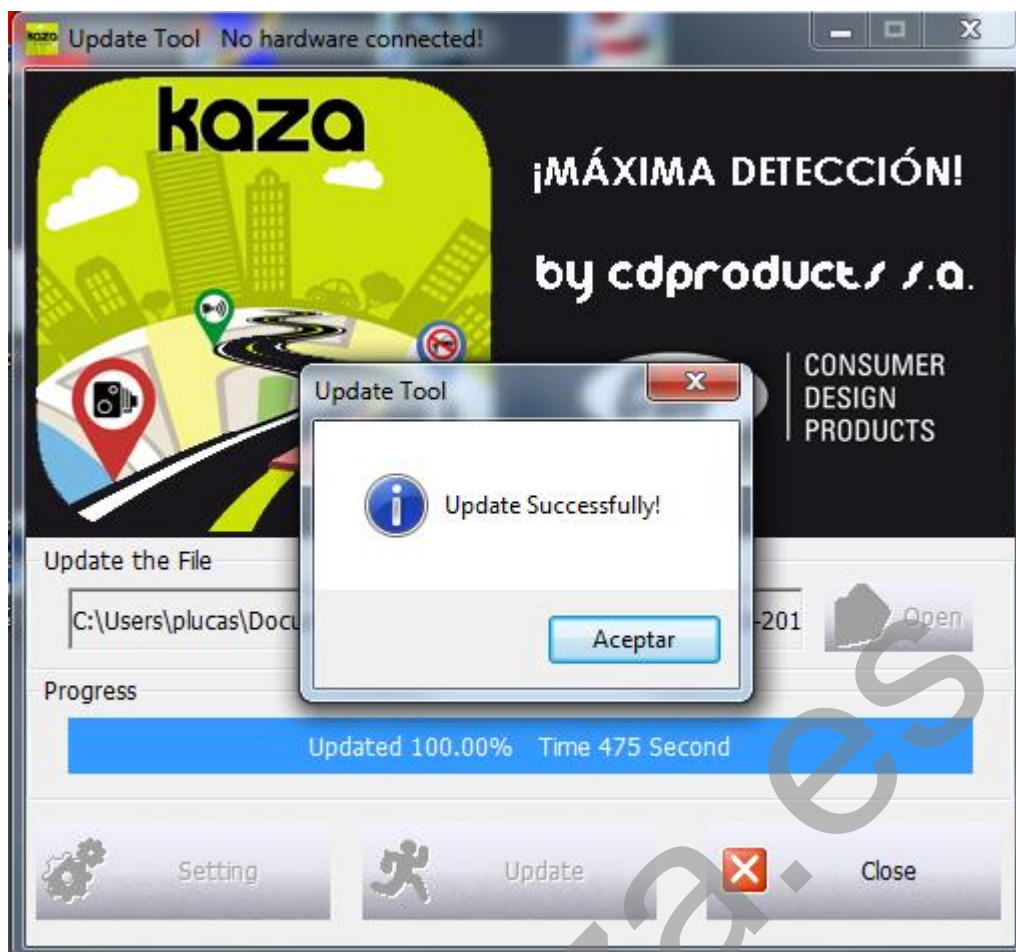


The buttons that were disabled will be turned on and in the header of the form will appear "GPS connected" and the version of the database that GPS currently has.

Then click on "Open" and select the update file that was downloaded to your PC.

When selected, press "Update" and wait for the program to complete the update as in the figure below (don't despair, it may take up to 8 minutes):





Disconnect the GPS and close the program.

### Important notice:

To change the voices to another language, the same process is followed, but the voice file and the desired database are downloaded.

### IMPORTANT NOTICE:

**KAZA reserves the right to modify the manual and product features without prior notice. Also, some of the features described in this manual may vary depending on the version of the software that has been installed or the optional components purchased.**

**This device is designed to help the responsible driver comply with the rules of the Highway Code. The user of this device is solely and personally responsible for its use, taking into account the provisions of each country. The manufacturer or its distributor shall not be liable if its use is contrary to the provisions of the legislation in force in the country in which it is used.**